



Refer to User Manual for comprehensive information:  
<http://www.mtts-asia.com/wallaby-warmer/>

### Optional Components List



IV Pole (WLB-1030)



Storage Drawer (WLB-1050)



Cylinders Holder (WLB-1060)



Storage Shelf (WLB-1040)



Holding Pole (WLB-1100)

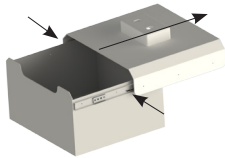
### Cylinders Holder (WLB-1060)



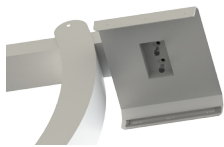
2 x Bolt M10x25

## Storage Drawer (WLB-1050)

- ① Disconnect top and bottom parts  
Press black latch on both sides and slide out



- ② Attach the top part to the control unit  
Use 2 x Bolt M10x25



- ③ Connect the bottom part  
Slide in until you hear a 'click' sound



## IV Pole (WLB-1030), Storage Shelf (WLB-1040), Holding Pole (WLB-1100)

